

Permanent Land Protection

FY 2023

Annual Update

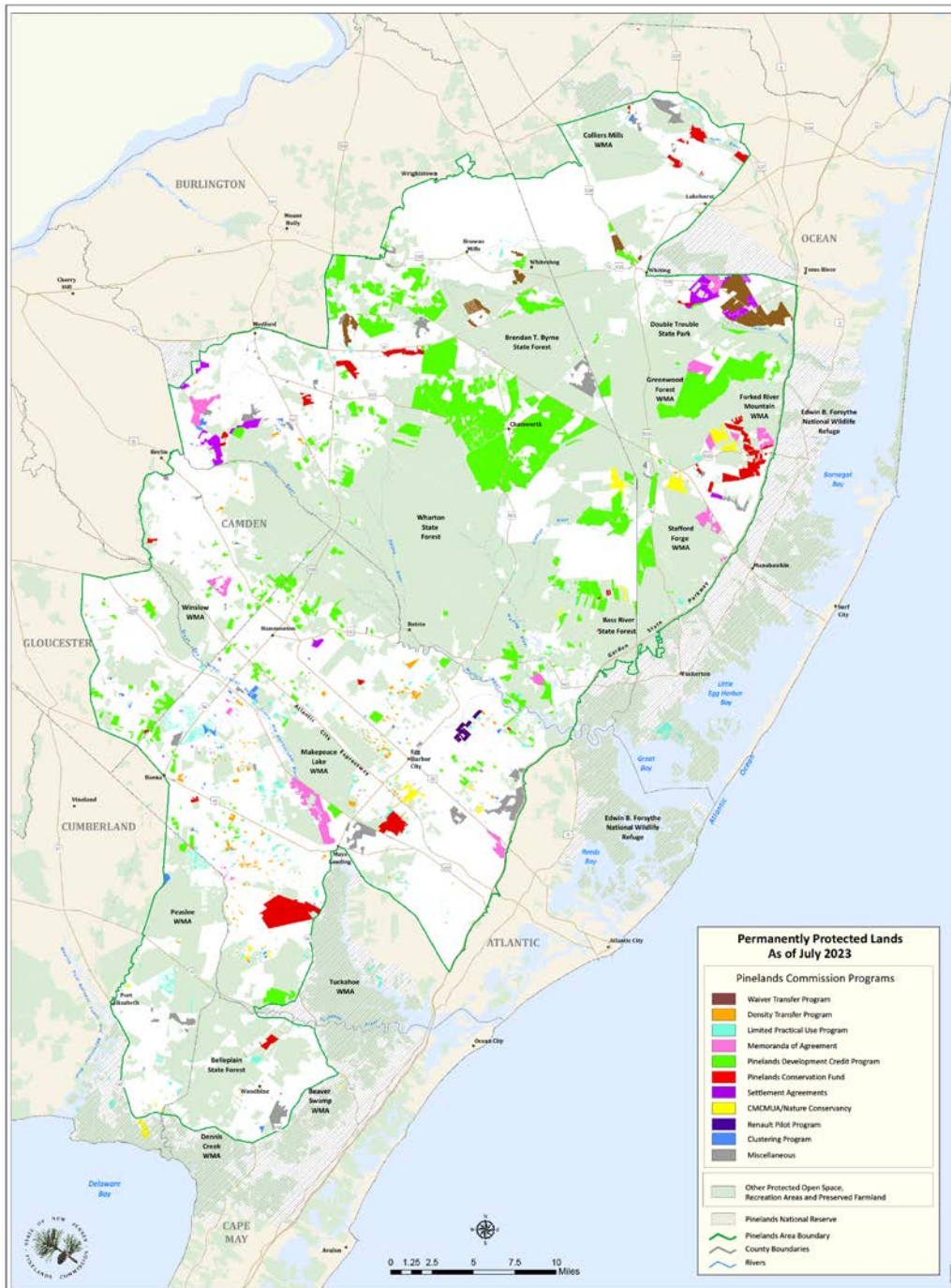




Highlights

- Farmland Preservation: Dennis, Pemberton, Tabernacle & Hammonton
- 348 acres in PDC Severances
- Open space acreage added in Estell Manor between Peaslee acquisition area & Tuckahoe acquisition area

Newly Protected Land in the Pinelands Area July 2022 – June 2023



All Programs FY 2023	Acres Protected
Pinelands Programs	123
PDC Severance	348
State Acquisitions	198
County Farmland Preservation	690
County Open Space	0
Non-Profit Organizations	0
Total Acres	1,359



Preservation by Agency Group

620 ac = Government Agencies (farmland, open space)

123 ac = Pinelands Programs (app conditions, settlements, Ocean Acres ordinance)

348 ac = Pinelands Development Credit Program

0 ac = Non-Governmental Organizations

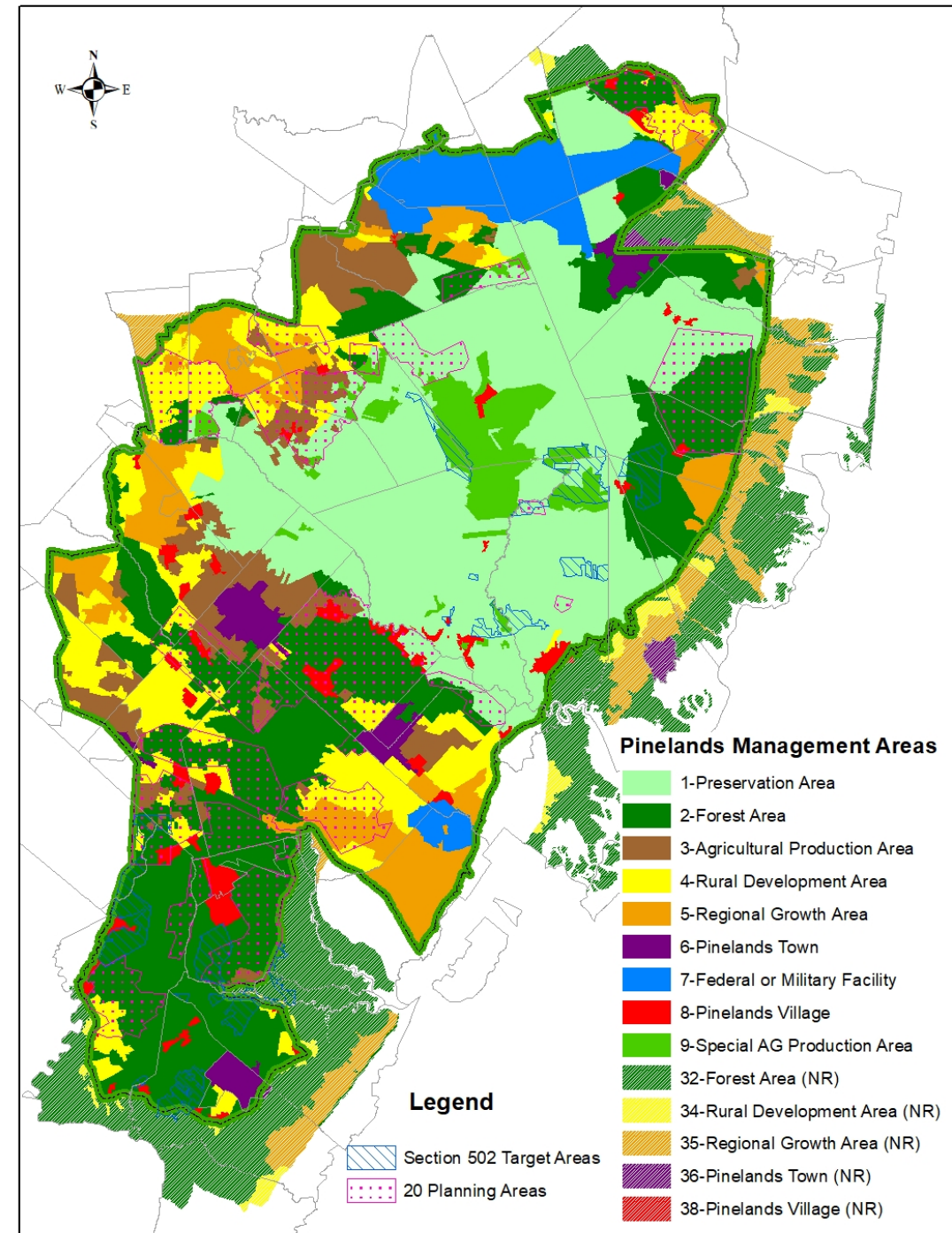
Planning Areas & Section 502 Target Areas

Section 502 Target Areas

- Refers to National Parks & Recreation Act of 1978, Title 16 sec.471i
- Appropriated funding, identified acquisition goals and target areas
- 65% of total acreage in Section 502 Target Areas is preserved (no change)

Planning Areas

- Identified by the Pinelands Commission
- Some overlap with Section 502 targets
- 40% of total acreage in 20 Planning Areas is preserved



Pinelands Programs



Non-buildable subdivision – 84 acres

Violation reparation – 19 acres

Septic dilution – 14 acres

Forest Area/Rural Development Area Clustering – 6 acres

Green Acres/NJDEP Pinelands Area Acquisitions

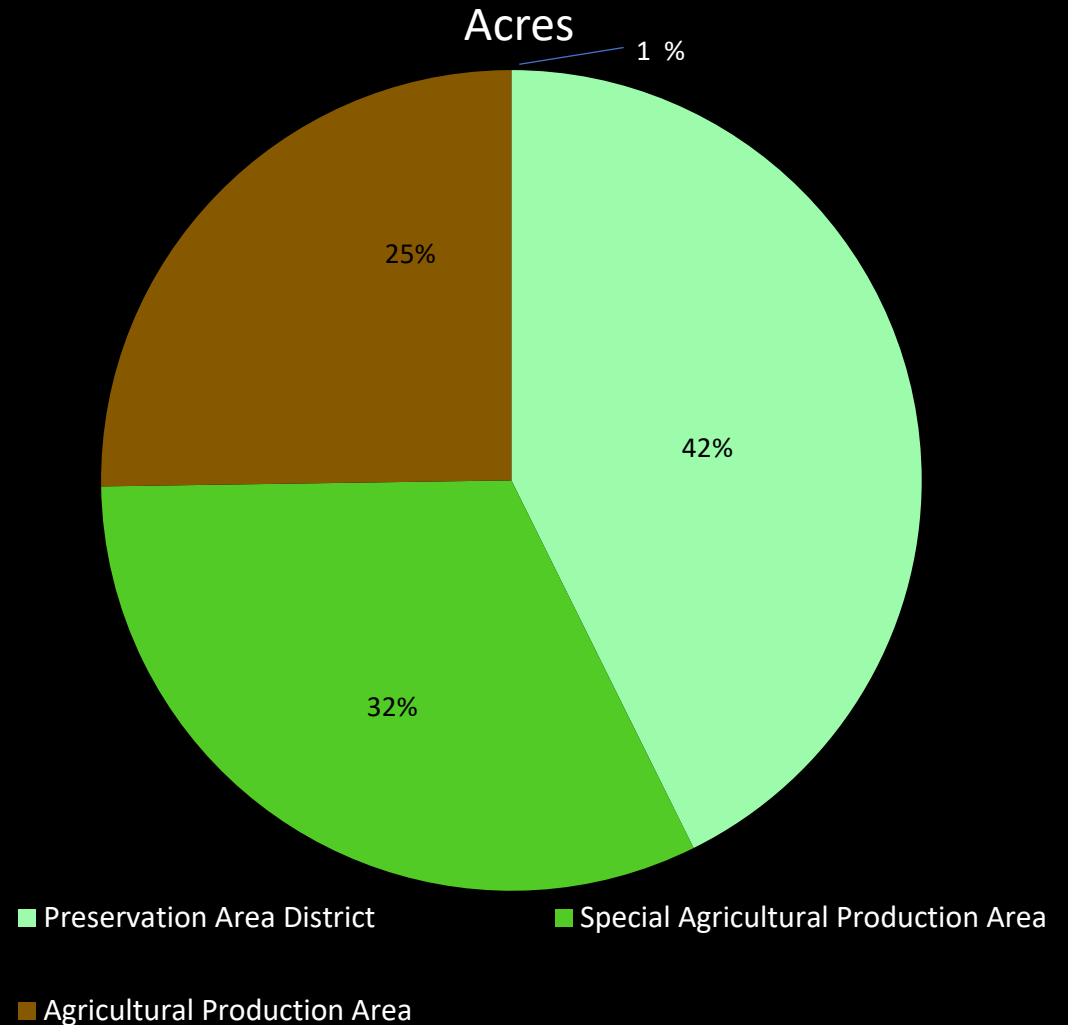
Municipality	Management Area	Area
Barnegat Township	Preservation Area District	1 acre
Bass River Township	Preservation Area District	144 acres
Eagleswood Township	Preservation Area District	2 acres
Estell Manor City	Forest Area and Pinelands Village (50/50)	31 acres
Galloway Township	Preservation Area District	20 acres

Protected Land in All Management Areas 2023

Management Area	Total Acres in Management Area	% Protected
Preservation Area District	295,000	85%
Special Agricultural Production Area	37,500	66%
Forest Area	257,000	57%
Agricultural Production Area	68,500	43%
Rural Development Area	109,500	21%
Regional Growth Area	76,500	8%
Pinelands Village	26,000	4%
Pinelands Town	21,500	6%
Military/Federal Installation Area	47,000	1%

PDC Program Lands Preserved through FY 2023

Management Area	Acres Preserved
Preservation Area District	24,431
Special Agricultural Production Area	18,371
Agricultural Production Area	14,446
Total	57,248



Acres Preserved

(rounded to the nearest thousand)

**482,000 ACRES =
51% of Pinelands
Area**

